



# Inspiration for groups and day trips in Denmark & Sweden





## Dear bus tour operator,

We are pleased to present our **day trip programme** to you. Below you will find a brief overview of how a day trip for your group can be organised.

You can easily integrate a day trip to Denmark or Sweden into your multi-day group tours to the Baltic Sea region, Schleswig-Holstein, Hamburg or Mecklenburg-Western Pomerania.

Thanks to our **frequent ferry departures and short crossing times**, you can plan your itinerary flexibly and reach your destination quickly.

The journey from Puttgarden on the island of Fehmarn to the Danish port town of Rødby on Lolland takes just 45 minutes, with up to 45 departures per day during peak season.

The ferries on the Rostock (Germany) – Gedser (Denmark, island of Falster) route operate up to 10 daily departures in high season, offering a relaxed crossing time of 2 hours.

A crossing with Scandlines is a **special experience for your guests** – feel the fresh sea air, glide across the Baltic Sea and enjoy the maritime atmosphere of the port cities.

All our ferries are equipped with **modern hybrid technology**, significantly reducing emissions. On the Rostock–Gedser route, rotor sails additionally contribute to lowering CO<sub>2</sub> emissions.

On board our ferries, we offer **special group menus**, which can be pre-ordered at attractive prices.

### What can you experience in Denmark and Sweden?

Copenhagen is always a popular destination – many visitors enjoy exploring the beautiful cycling city on foot. The sister island of Rügen, the island of Møn, impresses with its stunning natural scenery, charming Danish villages, romantic castle gardens and the famous chalk cliffs of Møns Klint National Park. Other highlights include beautiful castles, fascinating museums. Or plan a trip to Malmø and southern Sweden – just across the Öresund.

The appendix contains **thematic day trip inspirations** as well as our study trips from earlier years, designed to support you in creating your own group itineraries. These tours are intended as inspiration only – each programme can be customised and expanded individually.

You can find our complete overview of **day trips to Denmark and Sweden** here: [bus.scandlines.com/travelinspiration](https://bus.scandlines.com/travelinspiration)

Our **current bus price list** is available here: [bus.scandlines.com/prices/bus-prices](https://bus.scandlines.com/prices/bus-prices)

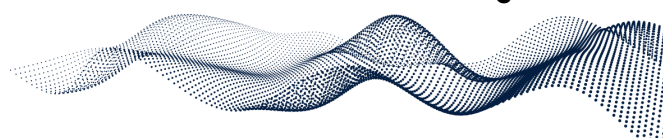
We offer our partners and frequent travelers attractive discounts. From an annual turnover of €1,000 you will receive a 10 % discount on our standard tariffs.

If we have sparked your interest and you would like further inspiration, for example hotel recommendations in the greater Copenhagen area, please contact us at [gonorth@scandlines.com](mailto:gonorth@scandlines.com).

We are looking forward to welcoming you on board!

With maritime greetings

**Your Scandlines B2B team**



TOUR 1

# Copenhagen



© Tivoli/Lasse Scalling

**PUTTGARDEN-RØDBY**

**ROSTOCK-GEDSER**

**OUTWARD JOURNEY**

Puttgarden at 9:15  
– arrival at 10:00 in Rødby

Rostock Überseehafen at 9:00  
– arrival at 11:00 in Gedser

**Catering outward journey**

You can find the current catering price lists here:  
[bus.scandlines.com/food-on-board/group-menus](https://bus.scandlines.com/food-on-board/group-menus)

**Distance to destination**

From Rødby around 170 km (about 2 hours)

From Gedser around 160 km (about 2 hours)

**Arrival in Copenhagen**

Around 12:30

Around 13:00

**DEPARTURE FROM COPENHAGEN 17:30**

**Return journey**

From Rødby at 20:15

From Gedser at 20:15

**Catering return journey**

Gedser–Rostock route: Group meals available on request, also after 20:00

## Programme

90 minutes guided city tour respectively sightseeing tour with e.g. **Show me Copenhagen** ([showmecopenhagen.dk](https://showmecopenhagen.dk))

Individually designed tours in Copenhagen.

Contact: Carina Gesche, email: [cg@showmecopenhagen.dk](mailto:cg@showmecopenhagen.dk). Price on request

In the afternoon from 14:00 to 15:30, guests can explore the city on their own, meeting point at the main entrance of Tivoli, Vesterbrogade 3, DK-1630 Copenhagen.

15:30: Visit the amusement park **Tivoli**

The legendary amusement park Tivoli ([tivoli.dk/en](https://tivoli.dk/en)) in the middle of Copenhagen.

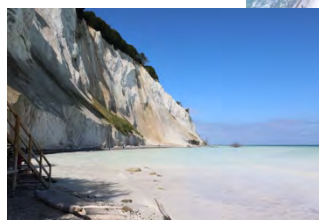
We also recommend visiting during the Christmas season.

Contact for groups: phone: 0045 33 75 02 47 or email: [sales@tivoli.dk](mailto:sales@tivoli.dk)

**Insider tip with free entry:** As an alternative to Tivoli, we recommend the world's oldest amusement park **Bakken**, 10 minutes north of Copenhagen: [bakken.dk](https://bakken.dk)

## TOUR 2

# Island of Møn



© Møns Klint

### PUTTGARDEN-RØDBY

### ROSTOCK-GEDSER

#### OUTWARD JOURNEY

Puttgarden at 9:15  
– arrival 10:00 in Rødby

Rostock Überseehafen at 9:00  
– arrival 11:00 in Gedser

#### Catering outward journey

You can find the current catering price lists here:  
[bus.scandlines.com/food-on-board/group-menus](https://bus.scandlines.com/food-on-board/group-menus)

#### Distance to destination Stege

From Rødby around 85 km (about 1 hour)

From Gedser around 90 km (about 1 hour)

#### Arrival in Stege

11:00

12:00

#### DEPARTURE MØNS KLINT AT 17:30

#### Return journey

Rødby at 19:15

Gedser at 20:15

#### Catering return journey

Gedser–Rostock route: Group meals available on request, also after 20:00

## Programme

Meeting point harbour in Stege, guided City walk and sightseeing trip with **guest guide Bent**. Visits of Elmelunde or Keldby Kirke, Møns Klint and Liselund Palace. You can clarify the order of the stops in advance with the guest guide.

Contact guest guide:

Bent B. Larsen, email: [valdemar29@outlook.dk](mailto:valdemar29@outlook.dk). Price on request

14:30: Visit **Geomuseum Møns Klint**, Stengårdsvej 8, DK-4791 Borre, or take a short walk to the cliff viewing platform. Afterwards coffee & cake.

Please send a price request to Nils Natorp, email: [nn@moensklint.dk](mailto:nn@moensklint.dk)

**Insider tip with free entry:** On the way back to the ports, you can visit the artwork „Dodekalitten“, Kragenæsvej 62, DK-4943 Torrig.

TOUR 3

# Gavnø Castle – Tulip Festival in April/May



© Gavnø Slot

**PUTTGARDEN–RØDBY**

**ROSTOCK–GEDSER**

**OUTWARD JOURNEY**

Puttgarden at 9:15  
– arrival 10:00 in Rødby

Rostock Überseehafen at 9:00  
– arrival 11:00 in Gedser

**Catering outward journey**

You can find the current catering price lists here:

[bus.scandlines.com/food-on-board/group-menus](https://bus.scandlines.com/food-on-board/group-menus)

**Distance to destination Gavnø Castle, Gavnø 9, DK-4700 Næstved**

From Rødby around 140 km (about 90 minutes)

From Gedser around 90 km (about 90 minutes)

**Arrival Gavnø Castle**

11:45

12:45

**DEPARTURE GAVNØ CASTLE GEGEN 15:45**

**Return journey**

Rødby at 17:45

Gedser at 18:00

**Catering return journey**

Gedser–Rostock route: Group meals available on request, also after 20:00

## Programme

12:00–13:00: 1-hour guided castle tour

13:00–14:00: guided tour in the castle's own brewery, small snack and beer tasting (30-45 minutes)

Free time for guests depending on schedule

14:45: Tour in the park (maximal 45-60 minutes)

Further information:

Homepage: [gavnoe.dk/en](https://gavnoe.dk/en)

### Other Highlights:

Lily Festival in late summer

Christmas market in November

Group and price requests: email: [booking@gavnoe.dk](mailto:booking@gavnoe.dk)

Please book guided tours and arrangements in advance.

TOUR 4

# Bosjökloster & Malmö



©Bosjökloster

PUTTGARDEN-RØDBY	ROSTOCK-GEDSER
<b>OUTWARD JOURNEY</b>	
Puttgarden at 7:45 – arrival at 8:30 in Rødby, Öresundslinjen from Helsingör, every 20 minutes	Rostock Überseehafen at 6:00 – arrival at 8:00 in Gedser, Öresundslinjen from Helsingör, every 20 minutes
<b>Catering outward journey</b>	
You can find the current catering price lists here: <a href="https://bus.scandlines.com/food-on-board/group-menus">bus.scandlines.com/food-on-board/group-menus</a>	
<b>Distance to destination Bosjökloster 111, SE-243 95 Höör</b>	
From Rødby around 240 km (about 3 hours)	From Gedser around 235 km (about 3 hours)
<b>Arrival Bosjökloster</b>	
11:45	11:00
<b>Departure from Malmö 19:00 via Öresund Bridge</b>	
<b>Return journey</b>	
Rødby at 22:15	Gedser at 22:30
<b>Catering return journey</b>	
Gedser–Rostock route: Group meals available on request, also after 20:00	

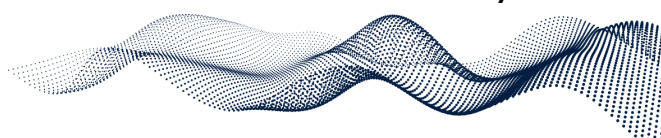
## Programme

Arrival at **Bosjökloster** 111, SE-243 95 Höör,  
Contact Bosjökloster for a group offer including entry, tour and meal. Group requests: Meike Stegemann, phone: 0046 413 250 48 or email: [info@bosjokloster.se](mailto:info@bosjokloster.se).  
Homepage: [bosjokloster.se](https://bosjokloster.se)

14:30: Departure Bosjökloster. Then it's on to **Malmö**. Approx. 45 minutes drive. Free time 2-3 hours. Alternatively, an individually tailored and sustainably inspired Malmö bike tour can be booked for guests. For more information, see [greenbiketours.org](https://greenbiketours.org).

19:00: Return journey to Rødby respectively Gedser, crossing the world-famous Öresund Bridge between Sweden and Denmark.

**Insider tip with free entry:** A short stop at the viewpoint "Öresundsbron" with a beautiful view over the Öresund region and the bridge in Utsiktsvägen 10, SE-216 30 Limhamn.  
A visit of the castle Kloster is highly recommended for trips to Norway and northern Sweden.



TOUR 5

# Helsingborg & Malmö



© Frederiksdal  
© Norrviken/Anna Nyman

PUTTGARDEN-RØDBY	ROSTOCK-GEDSER
<b>OUTWARD JOURNEY</b>	
Puttgarden at 7:45 – arrival 8:30 in Rødby, Öresundslinjen from Helsingör, every 20 minutes	Rostock Überseehafen at 6:00 – arrival 8:00 in Gedser, Öresundslinjen from Helsingör, every 20 minutes
<b>Catering outward journey</b>	
You can find the current catering price lists here: <a href="https://bus.scandlines.com/food-on-board/group-menus">bus.scandlines.com/food-on-board/group-menus</a>	
<b>Distance to destination Helsingborg</b>	
From Rødby around 260 km (about 3 hours)	From Gedser around 255 km (about 3 hours)
<b>Arrival open air Museum Fredriksdal, Gisela Trapps väg 1, SE-25437 Helsingborg</b>	
11:45	11:00
<b>DEPARTURE FROM MALMÖ 19:00 VIA ÖRESUND BRIDGE</b>	
<b>Return journey</b>	
Rødby at 22:15	Gedser at 22:30
<b>Catering return journey</b>	
Gedser–Rostock route: Group meals available on request, also after 20:00 pm	

## Programme

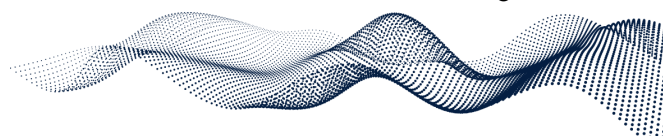
Arrival at **Open-Air Museum Fredriksdal**, Gisela Trapps väg 1, SE-254 37 Helsingborg  
90 minutes guided tour in the open-air museum and the botanical gardens. Prices on request. Group requests: Charlotte Alheim & Catharina Nilsson: email: [booking.fredriksdal@helsingborg.se](mailto:booking.fredriksdal@helsingborg.se).  
Homepage: [fredriksdal.se](http://fredriksdal.se)

Then it's on to the **Gardens of Norrviken**, Kattviksvägen 233, SE-269 91 Båstad, 3 km northwest from Båstad. Estimated arrival: 13:45.

14:00: Group package with admission, lunch and tour. Bus parking and entry for bus drivers free of charge.

Group and price requests Norrviken: email: [info@norrvikenbastad.se](mailto:info@norrvikenbastad.se)  
Homepage: [norrvikenbastad.se](http://norrvikenbastad.se)

**More info on the next page >**



16:00: Departure – and on to **Malmö**. Free time 2-3 hours. Alternatively, an individually tailored and sustainably inspired Malmö bike tour can be booked for guests. For more information, see homepage: [greenbiketours.org](https://greenbiketours.org).

19:00: Return journey to Rødby respectively Gedser, crossing the world-famous Öresund Bridge between Sweden and Denmark.

**Insider tip with free entry:** A short stop at the viewpoint "Öresundsbron" with a beautiful view over the Öresund region and the bridge in Utsiktsvägen 10, SE-216 30 Limhamn.

This tour is highly recommended for trips to Norway and northern Sweden.

TOUR 6

# Christmas markets in & around Copenhagen

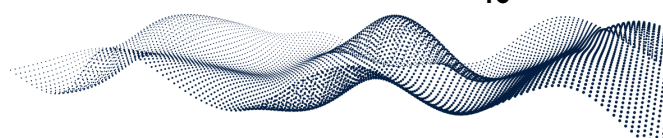


Many Christmas and Advent markets have been established around the Danish capital in recent years. Castles, palaces and open-air museums shine in Christmas splendor. Here you will find a small, fine selection.

COPENHAGEN	
<b>Kongens Nytorv</b> Period: November/December (closes shortly before Christmas Eve)	
<b>H.C. Andersen Christmas market at Nytorv</b> Period: November/December (closes shortly before Christmas Eve)	Email: <a href="mailto:info@arli.dk">info@arli.dk</a> Homepage: <a href="http://julemarkedet.co">julemarkedet.co</a>
<b>Tivoli</b> Period: mid of November until beginning of January	Contact: Flemming Otto Grüner, email: <a href="mailto:flgr@Tivoli.dk">flgr@Tivoli.dk</a> Homepage: <a href="http://tivoli.dk/en">tivoli.dk/en</a>
ZEALAND	
<b>Gavnø castle</b> Period: first 2 weekends in November	Email: <a href="mailto:booking@gavnoe.dk">booking@gavnoe.dk</a> Homepage: <a href="http://gavnoe.de/event/weihnachten">gavnoe.de/event/weihnachten</a>
<b>Gissselfeld Kloster</b> Period: first weekend of Advent	Email: <a href="mailto:mail@gissselfeld-kloster.dk">mail@gissselfeld-kloster.dk</a> Homepage: <a href="http://gissselfeld-kloster.dk">gissselfeld-kloster.dk</a>
FALSTER	
<b>Medieval Center in Nykøbing</b> Period: first weekend of Advent	Contact: Jorge Lar, email: <a href="mailto:jorge@middelaldercentret.dk">jorge@middelaldercentret.dk</a>

You can find a larger selection of Christmas markets here:  
[bus.scandlines.com/travelinspiration/destinations-and-christmas-markets](http://bus.scandlines.com/travelinspiration/destinations-and-christmas-markets).

Please contact the organizers in good time to clarify opening hours, entrance fees if applicable, bus parking and other details. Please note that many Danish Christmas markets no longer accept cash.



TOUR 7

# Christmas in Copenhagen



In November 2022, our first study trip after the pandemic took us to Copenhagen in Advent. Feel free to use the individual attractions as building blocks for inspiration for your upcoming tours.

## OUTWARD JOURNEY

### PUTTGARDEN-RØDBY

Departure from Puttgarden at 9:45  
– arrival at 10:30 in Rødby

### ROSTOCK-GEDSER

Departure from Rostock Überseehafen  
at 9:00 – arrival at 11:00 in Gedser

### Catering outward journey

You can find the current catering price lists here:  
[bus.scandlines.com/food-on-board/group-menus](https://bus.scandlines.com/food-on-board/group-menus)

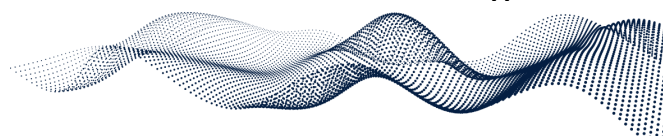
**Distance from Rødby** to Stevns Klint:

Around 128 km (about 1 ½ hours)

**Distance from Gedser** to Stevns Klint:

Around 117 km (about 1 ½ hours)

**3 DAY PROGRAMME >**



TOUR 7

# Day 1



©Mark Wengler

## PROGRAMME

12:30: Visit from **Stevns Klint Experience Center and guided tour**

Boesdalsvej 14, DK-4673 Rødvig Stevns

Contact: group request & catering, phone: 0045 3034 4979 or email: [booking@stevnsklint.dk](mailto:booking@stevnsklint.dk)

Homepage: [stevnsklint.dk](http://stevnsklint.dk)

14:30: departure to **Copenhagen**

Distance from Rødvig, ca. 72 km (ca. 1 hour), to **Hotel Copenhagen Island**

Kalvebod Brygge 53, DK-1560 Copenhagen

Check-in: from 15:00

Homepage: [copenhagenisland.dk](http://copenhagenisland.dk)

Free until 18:00, departure to **Bakken**

A/S Dyrehavsbakken, Dyrehavevej 62, DK-2930 Klampenborg

Entrance for free, buy "Turband" to use all the attractions/roller coasters

Homepage: [bakken.dk](http://bakken.dk)

From 19:30 typical Danish "Julefrokost" in **Restaurant Hvide Hest**

Dyrehavsbakken 98, DK-2930 Klampenborg

Group requests: phone: 0045 39 63 40 50 or email: [hvidehest@hvidehest.dk](mailto:hvidehest@hvidehest.dk)

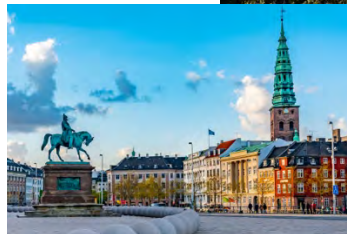
Seasonal buffet for groups

Homepage: [hvidehest.dk](http://hvidehest.dk)

22.00: Back to hotel

TOUR 7

# Day 2



© kadeconessa

## PROGRAMME

8:00: Breakfast

9:00: Guided tour in hotel

9:30: Departure hotel

10:00: Carina Gesche from **Show me Copenhagen** gets on the bus, four-hour guided city tour with "flødeboller" workshop and tasting (beer and smørrebrød)

Contact: phone: 0045 23 23 78 01 or email: [cg@showmecopenhagen.dk](mailto:cg@showmecopenhagen.dk)

Homepage: [showmecopenhagen.dk](http://showmecopenhagen.dk)

*With our participants we have visited for example:*

### **Copenhill**

Vindmøllevej 6, DK-2300 Copenhagen

Group requests: email: [sales@copenhill.dk](mailto:sales@copenhill.dk)

Homepage: [copenhill.dk](http://copenhill.dk)

**Insider tip:** Free entry, beautiful views of Copenhagen and the Öresund

Free time from 15:00, participants can visit the Christmas markets.

19:30: Dinner in **Madklubben Vesterbro**

Vesterbrogade 62, DK-1620 Copenhagen V

Group requests: phone: 0045 38 41 41 43 or email: [vesterbro@madklubben.dk](mailto:vesterbro@madklubben.dk)

Homepage: [madklubben.dk/restauranter](http://madklubben.dk/restauranter)

Upscale ambience, suitable for groups, timeslot: two hours

From 21:45 visit the Christmas decorated **Tivoli**

Vesterbrogade 3, DK-1630 Copenhagen V

Contact: Flemming Otto Grüner, email: [flgr@Tivoli.dk](mailto:flgr@Tivoli.dk)

Homepage: [tivoli.dk/en](http://tivoli.dk/en)

Please note opening times in winter.

TOUR 7

# Day 3



©Middelaldercentret

## PROGRAMME

9:00: Breakfast

10:00: Departure to **Medieval Centre in Nykøbing**  
Travel time: 1 ½ hours (140 km)

12:00: **Visit Christmas market** in Medieval Centre in Nykøbing  
Ved Hamborgskoven 2, 4, DK-4800 Nykøbing Falster  
Contact: Jorge Lar, email: [jorge@middelaldercentret.dk](mailto:jorge@middelaldercentret.dk)  
Homepage: [middelaldercentret.dk](http://middelaldercentret.dk)

Around the first Advent, the open-air museum organizes a Christmas market with artisans from the region. Entrance fee approximately €5.

### RETURN JOURNEY

#### RØDBY-PUTTGARDEN

Distance to Rødby:  
Around 46 km (about 35 minutes)

#### Insider tip:

Before leaving Rødby, stop at the Dodekalitten artwork, Kragencæsvej 62, DK-4943 Torrig

Departure from Rødby at 16:15  
– arrival in Puttgarden at 17:00

#### GEDSER-ROSTOCK

Distance to Gedser:  
Around 28 km (about 30 minutes)

#### Insider tip:

Before leaving Gedser, plan a stop in Marielyst and drive to the southernmost point of Denmark

Departure from Gedser at 15:45  
– arrival in Rostock Überseehafen at 17:45

#### Catering return journey

You can find the current catering price lists here:  
[bus.scandlines.com/food-on-board/group-menus](http://bus.scandlines.com/food-on-board/group-menus)

Gedser–Rostock route: Group meals available on request, also after 20:00

TOUR 8

# Malmö & South Sweden in a different way



© Kentaroo Tryman

Malmö and southern Sweden were our destinations in late summer 2023. A very nice tour with many unknown attractions and great experiences. The individual attractions are particularly suitable for multi-day tours.

OUTWARD JOURNEY	
PUTTGARDEN-RØDBY	ROSTOCK-GEDSER
Departure from Puttgarden at 9:45 – arrival at 10:30 Rødby, Öresund Bridge	Departure from Rostock Überseehafen at 9:00 – arrival at 11:00 in Gedser, Öresund Bridge

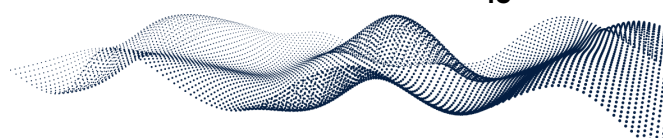
**Catering outward journey**

You can find the current catering price lists here:  
[bus.scandlines.com/food-on-board/group-menus](https://bus.scandlines.com/food-on-board/group-menus)

Distance from Rødby to Malmö:  
around 195 km (about 2 ½ hours)

Distance from Gedser to Malmö:  
around 185 km (about 2 ½ hours)

**3 DAY PROGRAMME >**



TOUR 8

# Day 1



© Laurie Noble

13:15: arrival in Malmö

Accommodation for two days: **Park Inn by Radisson Malmö**

Sjömansgatan 2, SE-211 11 Malmö

Contact: Regina Salzmann, General Manager, email: [info.malmo@parkinn.com](mailto:info.malmo@parkinn.com), languages: DE, EN

Upon arrival, tour of the hotel and welcome drink.

Check-in: from 15:00 (inquire about earlier check-in)

Very central, right at Turning Torso

Homepage: [radissonhotels.com/sv-se/hotell/park-inn-malmo](http://radissonhotels.com/sv-se/hotell/park-inn-malmo)

14:30: **Bicycle tour** organized by Marie Åkesson, City of Malmö

Contact: email: [marie.akesson@malmo.se](mailto:marie.akesson@malmo.se), language: EN, SWE

## Overview of the visited attractions:

14:30: **Fiske Hoddorna**, fish restaurant

Banérskajen 13

SE-211 18 Malmö

Homepage: [fiskehoddorna.se](http://fiskehoddorna.se)

15:45: **Malmö Saluhallen**, market halls

Gibraltargatan 6

SE-211 18 Malmö

Homepage: [malmosaluhall.se](http://malmosaluhall.se)

16:30: **Nybergs konditori**, Swedish coffee break „Fika“

Adelgatan 2

SE-211 22 Malmö

Homepage: [nybergshembageri.se/malmo](http://nybergshembageri.se/malmo)

17:00: **Disgusting food museum**

Södra Förstadsgatan 2

SE-211 43 Malmö

Homepage: [disgustingfoodmuseum.com](http://disgustingfoodmuseum.com)

18:00: **Bicycle tour ends and back to hotel**

19:30: dinner in **Rådhuskällaren**

Kompanigatan 5, SE-211 35 Malmö

Contact: Lena Niklasson, phone: 0046 40 790 20 or email: [lana@radhuskallaren.se](mailto:lana@radhuskallaren.se), language: EN

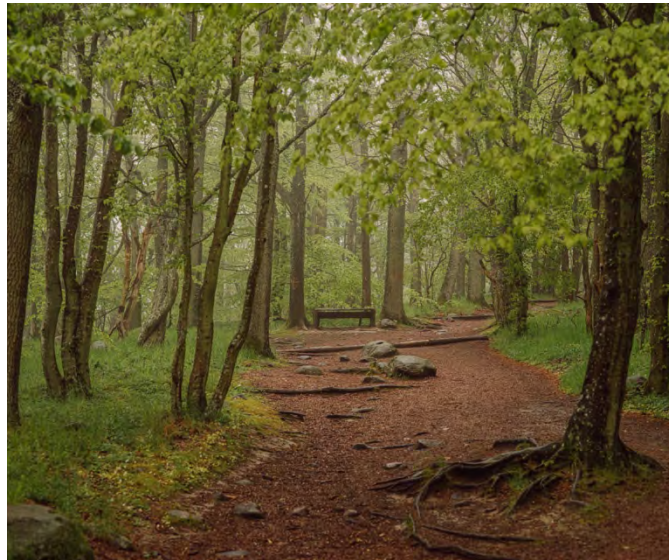
Suitable for groups

Homepage: [radhuskallaren.se](http://radhuskallaren.se)

22:00: back to hotel

TOUR 8

# Day 2



© knape

## PROGRAMME

8:00: Breakfast

8:30: Departure from the hotel and then a "Round tour through southern Sweden"

### Visited attractions:

#### **Stenshuvud Nationalpark**

SE-277 35 Simrishamn N

#### **Visit and lunch in Kivik Musteri – juice factory and apple orchard**

Karakåsvägen 45, SE-277 35 Kivik

Contact: Isabelle Haglund Wigh, phone: 0046 414-719 30 or email: [bokning@kiviksmusteri.se](mailto:bokning@kiviksmusteri.se)

language: EN, SWE

Homepage: [kiviksmusteri.se](http://kiviksmusteri.se)

#### **Guided Tour Ystad & round-trip Sweden – Aha! Guide & Aktivitet**

Contact: Guide Anette Hansson, phone: 0046 704674780 or email: [anette@ahaguideaktivitet.se](mailto:anette@ahaguideaktivitet.se)

language: EN, SWE

Tours in different languages, on request

Homepage: [ahaguideaktivitet.se](http://ahaguideaktivitet.se)

18:00: Back to Malmö

19:00: Arrival hotel

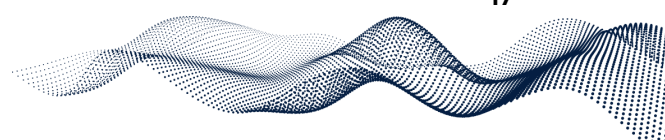
#### **19:30: dinner Siesta Restaurant**

Hjortackegatan 1, SE-211 33 Malmö

Contact: phone: 0046 40-611 10 27 or email: [info@siesta.nu](mailto:info@siesta.nu), language: EN, SWE

Homepage: [siesta.nu](http://siesta.nu)

22:00: back to hotel



TOUR 8

# Day 3



© Kentaroo Tryman

## PROGRAMME

7:30: Breakfast

8:00: Departure from hotel on the way to Lund  
Travel time: around 30 minutes (about 21 km)

9:00–10:30: guided **tour in Lund** with **Agnes i Lund**  
Guided tours in different languages, on request  
Homepage: [agnesilund.se](http://agnesilund.se)

Free time until 11:00

Continue to **Alnarp Slot och Parck**  
Slottsvägen 5, SE-230 53 Alnarp  
From 11:45 walk through the wonderful castle park

Finally, **parking lot/viewpoint Limhamn**  
Hultavägen 8, SE-216 30 Limhamn

**Insider tip:** Impressive view of the Öresund Bridge

### RETURN JOURNEY

Distance to Rødby:  
around 190 km (about 2 hours)

#### Rødby–Puttgarden

Departure from Rødby at 16:15  
– arrival in Puttgarden 17:00

Distance to Gedser:  
around 180 km (about 2 hours)

#### Gedser–Rostock

Departure from Gedser at 15:45,  
– arrival in Rostock Überseehafen at 17:45

### Catering return journey

You can find the current catering price lists here:  
[bus.scandlines.com/food-on-board/group-menus](http://bus.scandlines.com/food-on-board/group-menus)

Gedser–Rostock route: Group meals available on request, also after 20:00

TOUR 9

# Møn & West Zealand – on the trail of prehistoric times and Vikings



© Møns Klint

In 2024 the focus was on Møn & West Zealand. It was a journey through the history of Denmark: prehistoric times on Møn, Vikings in West Zealand and Roskilde as well as a short detour to the newest attraction, Copenhagen. Many unknown places and attractions that lie just outside the Danish capital.

## OUTWARD JOURNEY

### PUTTGARDEN-RØDBY

Departure from Puttgarden at 9:45  
– arrival at 10:30 Rødby, Öresund Bridge

### ROSTOCK-GEDSER

Departure from Rostock Überseehafen at 9:00  
– arrival at 11:00 in Gedser, Öresund Bridge

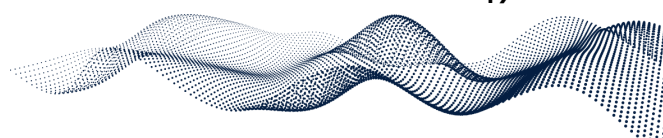
### Catering outward journey

You can find the current catering price lists here:  
[bus.scandlines.com/food-on-board/group-menus](https://bus.scandlines.com/food-on-board/group-menus)

Distance from Rødby to Møn:  
around 70 km (about 1 hour)

Distance from Gedser to Møn:  
around 75 km (about 1 hour)

**3 DAY PROGRAMME >**



TOUR 9

# Day 1



©Geocenter Møns Klint

## PROGRAMME

12:00: Arrival on Møn

Destination [Visit Sydsjælland & Møn](#) kindly helped us to plan and carry out our visit to Møn:

12:00–12:30: Guided tour **Fanefjord Church**

**TIP:** Famous lime paintings in the vaults

Fanefjord Kirkevej 49, DK-4792 Askeby

Opening hours: Monday to Sunday 8:00–18:00

Guided tours only in Danish.

Homepage: [fanefjordkirke.dk](http://fanefjordkirke.dk)

12:30–13:20: Drive to **geocenter Møns Klint**

13:20–14:20: Tour and visit to Møns Klint --> Coffee and cake afterwards in Café Møns Klint

Stengårdsvej 8, DK-4791 Borre, email: [geocenter@moensklint.dk](mailto:geocenter@moensklint.dk)

Homepage: [moensklint.dk](http://moensklint.dk)

14:20–14:35: Drive to **Liselund** castle

14:35–15:05: Visit **Park of Liselund**

Langebjergrvej 4, DK-4791 Borre, email: [liselund@natmus.dk](mailto:liselund@natmus.dk)

Homepage: [natmus.dk/museer-og-slotte/liselund](http://natmus.dk/museer-og-slotte/liselund)

15:10: Departure Gavnø Castle

16:30–17:30: Guided tour in gardens of **Gavnø Castle**

**TIP:** Tulip Festival in April and May.

Gavnø 2, DK-4700 Næstved

Homepage: [gavnoe.dk](http://gavnoe.dk)

18:15–18:30: Arrival **Thon Partner Hotel Sorø** & check-in

Guided tour at the hotel

Abildvej 100, DK-4180 Sorø, phone: 0045 81 11 35 87

Homepage: [thonhotels.com/da/hoteller/danmark/soro/thon-partner-hotel-soro](http://thonhotels.com/da/hoteller/danmark/soro/thon-partner-hotel-soro)

### CONTACT BOOKING

Rikke Grand Roth

[rikke.grand.roth@olavthon.dk](mailto:rikke.grand.roth@olavthon.dk)

19:30: dinner in the hotel restaurant  
Seasonal menu card. 2- or 3-courses menu  
(299 DKK or 399 DKK for groups, prices  
without beverages)

TOUR 9

# Day 2



©Werner Karrasch

## PROGRAMME

7:15: Breakfast

8:00: Check-out hotel

8:15: Departure hotel

### 9:00–11:00: **The Viking Fortress Trelleborg**

Tour with meat tasting and viking games (depending on the weather)

Trelleborg Allé 4, Hejninge, DK-4200 Slagelse,

Homepage: [en.natmus.dk/museums-and-palaces/trelleborg](http://en.natmus.dk/museums-and-palaces/trelleborg)

11:00: To Herslev (1 hour drive)

### 12:00–13:00: **Herslev Bryghus Aps**, regional brewery

Guided tour & Lunch

Kattingevej 16, Herslev, DK-4000 Roskilde, phone: 0045 46 40 18 07

Homepage: [herslevbryghus.dk](http://herslevbryghus.dk)

### Next Stop **Roskilde**

Destination [visitfjordlandet](http://visitfjordlandet) kindly helped us to plan and carry out our visit to Roskilde.

### 13:40–15:30: **Viking Ship Museum Roskilde**

Vindeboder 12, DK-4000 Roskilde

Homepage: [vikingskibsmuseet.dk](http://vikingskibsmuseet.dk)

13:40–14:15: Guided tour

14:30–15:30: Sailing tour on a replica Viking ship

15:30: Set off towards the cathedral and take a "short city tour"; **roskildeguides**

16:15–17:00: Guided tour **Roskilde Dome** with [roskildeguides](http://roskildeguides)

17:00: The bus picks us up and takes us to the hotel

17:30: Check-in at **Comwell Roskilde** & guided tour at the hotel

Vestre Kirkevej 12, DK-4000 Roskilde, email: [hotel.roskilde@comwell.com](mailto:hotel.roskilde@comwell.com)

Homepage: [comwell.com/hoteller/comwell-hotel-roskilde](http://comwell.com/hoteller/comwell-hotel-roskilde)

19:30: Dinner at **Restaurant Rådhuskælderen**

Seasonal menu card. 2- or 3-courses menu.

(299 DKK or 399 DKK for groups, prices without beverages)

Fondens Bro 3, DK- 4000 Roskilde, phone: 0045 46 36 01 00, email: [mail@raadhuskaelderens.dk](mailto:mail@raadhuskaelderens.dk)

Homepage: [raadhuskaelderens.dk/en/menu-offers](http://raadhuskaelderens.dk/en/menu-offers)

22:00: Back to the hotel

TOUR 9

# Day 3



©Daniel Rasmussen

## PROGRAMME

8:00: Breakfast

9:00: Check-out hotel

9:15: Departure hotel and off to Copenhagen (small city tour)

From 11:00 **Home of Carlsberg – Experience Center**

Gamle Carlsberg Vej 11, DK-1799 København, email: [booking@carlsberg.com](mailto:booking@carlsberg.com)

Homepage: [homeofcarlsberg.com](http://homeofcarlsberg.com)

Duration: 90–120 minutes

**TIP:** Book Culinary tour with [Delicious Denmark](#)

### RETURN JOURNEY

Distance to Rødby:  
around 165 km (about 1 hour 45 minutes)

Distance to Rødby:  
around 155 km (about 1 hour 45 minutes)

#### RØDBY-PUTTGARDEN

Departure from Rødby at 16:15  
– arrival in Puttgarden at 17:00

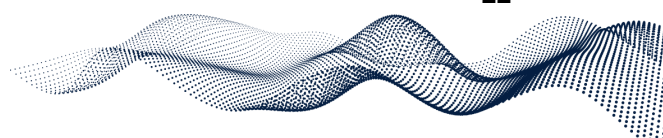
#### GEDSER-ROSTOCK

Departure from Gedser at 15:45  
– arrival in Rostock Überseehafen at 17:45

### Catering return journey

You can find the current catering price lists here:  
[bus.scandlines.com/food-on-board/group-menus](http://bus.scandlines.com/food-on-board/group-menus)

Gedser–Rostock route: Group meals available on request, also after 20:00



TOUR 10

# Lolland-Falster & North Zealand – Baltic. Coast. Romance.



Anyone who thinks Lolland-Falster and North Zealand have nothing to offer in terms of landscape and culture has truly missed a lot on our study trip in May 2025. Both regions are also insider tips when it comes to cuisine. Cherry wine from Lolland and art in the world-famous Louisiana Art Museum are two highlights that left a lasting impression. The individual attractions are particularly recommended for multi-day tours.

## OUTWARD JOURNEY

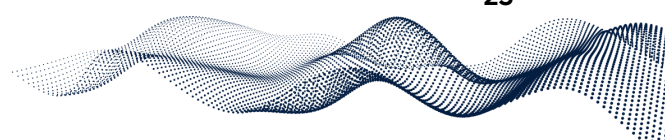
### ROSTOCK–GEDSER

Rostock Überseehafen at 9:00 – arrival around 11:00 in Gedser

### Catering outward journey

You can find the current catering price lists here:  
[bus.scandlines.com/food-on-board/group-menus](https://bus.scandlines.com/food-on-board/group-menus)

Around 11:10, continue to Marielyst.  
Distance from Gedser to Marielyst is around 20 km  
(about 20 minutes)



TOUR 10

# Day 1



© Knuthenborg

## PROGRAMME

11:30: Arrival in Marielyst, 30-minute stopover. Visit the beach and pier, as well as the town center. Destination [visitlollandfalster](#) supported our Study Trip.

### Contact:

Email: [info@visitlf.dk](mailto:info@visitlf.dk)

Homepage: [visitlolland-falster.de](http://visitlolland-falster.de)

12:00: Departure to Knuthenborg Safari Park near Maribo

12:45–14:30: Guided Tour **Knuthenborg Safaripark and Evolutionsmuseum**

Knuthenborg Alle 1, DK-4930 Maribo, email: [mail@knuthenborg.dk](mailto:mail@knuthenborg.dk)

Homepage: [knuthenborg.dk](http://knuthenborg.dk)

14:30–15:15: Drive to **Frederiksdal Kirsebærvin**

15:15–16:30: Guided Tour and Tasting

Frederiksdalsvej 30, DK-4912 Harpelunde

Inge Fisk, Sales & Marketing Manager, email: [if@frederiksdal.com](mailto:if@frederiksdal.com)

Homepage: [Frederiksdal.com](http://Frederiksdal.com)

16:30: Departure

16:30–17:00: Drive to **Artwork Dodekalitten**

17:00–18:00: Walk to the artwork, 2 km

Kragenæsvej 62, DK-4943 Torrig,

Homepage: [de.dodekalit.dk](http://de.dodekalit.dk)

18:05: Departure to Hotel in Rødbyhavn

18:45: Arrival at **Hages Badehotel** & check-in

Afterwards a short, guided tour by the hotel staff

Hagesvej 1B, DK-4970 Rødby,

Homepage: [hagesbadehotel.com](http://hagesbadehotel.com)

### CONTACT

Rikke Lohse, Hotel Manager

Email: [rl@hagesbadehotel.com](mailto:rl@hagesbadehotel.com)

Phone: 0045 40584331

19:30: Dinner at the

**hotel restaurant „Surt & Sødt“**

Seasonal menu: 3-course menu  
(375 DKK, price without drinks)

### Contact restaurant:

Martin Rommel

Email: [surtogsodt@gmail.com](mailto:surtogsodt@gmail.com)

TOUR 10

# Day 2



## PROGRAMME

6:30: Breakfast

7:30: Check-out hotel

7:45: Departure hotel, Continue to North Zealand  
Destination [visitnordsjaelland](https://www.visitnordsjaelland.dk) supported our Study Trip

### Contact:

Anne Marie von Vultejus, email: [amv@visitnordsjaelland.com](mailto:amv@visitnordsjaelland.com)  
Homepage: [visitnordsjaelland.dk](https://www.visitnordsjaelland.dk)

### 10:00–12:00: **Frederiksborg Castle in Hillerød**

Group is dropped off Møntportvejen, DK-3400 Hillerød  
Bus goes to Rendelæggerbakken bus parking

### **Frederiksborg Castle**

DK-3400 Hillerød, email: [info@frederiksborg.dk](mailto:info@frederiksborg.dk)  
Homepage: [frederiksborg.dk](https://www.frederiksborg.dk)

### 12:00–12:45: Lunch with Smørrebrød at **Café Havehuset**

Rendelæggerbakken 2, DK-3400 Hillerød, email: [cafe@cafehaveset.dk](mailto:cafe@cafehaveset.dk)  
Homepage: [cafehaveset.dk](https://www.cafehaveset.dk)

12:50: Departure bus parking

### **Round Trip in Nordseeland**

13:20: Photo stop in **Rågeleje**

13:45–15:00: Guided Tour **Gilleleje**

15:05: Departure via Dronningmølle to **Humblebæk**

### 15:45–17:15: Visit **Louisiana Museum für Moderne Kunst**

Gl. Strandvej 13, DK-3050 Humlebæk, email: [mail@louisiana.dk](mailto:mail@louisiana.dk)  
Homepage: [louisiana.dk/en](https://www.louisiana.dk/en)

More info on  
the next page >

TOUR 10

## Day 2



### *... Programme continued*

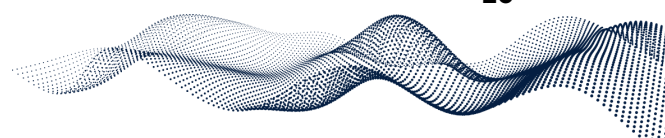
17:20: Bus picks us up and takes us to the hotel

17:30: Check-in **Comwell Borupgaard** & guided tour  
Nørrevej 80, DK-3070 Snekkersten, email: [hotel.borupgaard@comwell.com](mailto:hotel.borupgaard@comwell.com)  
Homepage: [comwell.com/hoteller/comwell-hotel-borupgaard](http://comwell.com/hoteller/comwell-hotel-borupgaard)

19:30: Dinner in **Gl. Humlebæk Kro**  
Monthly menu with regional products. 2- or 3-course menus for groups.

Humlebæk Strandvej 2A, DK-3050 Humlebæk, contact Jane Krensler on email:  
[jane@gamlehumlebaekkro.dk](mailto:jane@gamlehumlebaekkro.dk)  
Homepage: [gamlehumlebaekkro.dk](http://gamlehumlebaekkro.dk)

22:00: Back to the hotel



TOUR 10

# Day 3



## PROGRAMME

7:45: Breakfast

8:20: Check-out hotel

8:40: Departure to Helsingør

9:00: Guided city tour with **Helsingør Guide Tours**

Duration: 90–120 minutes

Stengade 77 (Galleri 77 in the basement), DK-3000 Helsingør, email: [helsingoerguidetours@gmail.com](mailto:helsingoerguidetours@gmail.com),

languages: DK & EN.

Homepage: [helsingoerguidetours.com](http://helsingoerguidetours.com)

Start in the historic vaulted cellar with pastries and coffee/tea. Offered only until the end of 2026.

Afterwards a short detour to the [Kronborg Slot](#), about 5 minutes walk away, [Danish Maritime Museum](#) is also located there. Not included in the tour.

Departure no later than 11:30

12:00: Arrival at the **Karen Blixen Museum** in Rungsted

Rungsted Strandvej 111, DK-2960 Rungsted Kyst, email: [omvisning@blixen.dk](mailto:omvisning@blixen.dk)

Homepage: [blixen.dk](http://blixen.dk)

14:00: Departure

**TIP:** Return trip along the coastline to Copenhagen

### RETURN JOURNEY

Distance to Rødby:  
around 165 km (about 1 hour 45 minutes)

### RØDBY-PUTTGARDEN

Rødby at 16:45 departure – arrival in Puttgarden around 17:30

### Catering return journey

You can find the current catering price lists here:

[bus.scandlines.com/food-on-board/group-menus](http://bus.scandlines.com/food-on-board/group-menus)

Gedser–Rostock route: Group meals available on request, also after 20:00

